

www.ting-rohrsysteme.de



www.ting-rohrsysteme.de



TING Ing.gesell.mbH
An der Kaoline 3
04651 Bad Lausick
Germany

Tel.: 034345 - 25560
Fax: 034345 - 25563
ting@ting-rohrsysteme.de

Pipe System for the Transport of Fatty Sewage

Accessories

For trace-heated pipes, all control, fitting and connection sets are included in the scope of delivery.

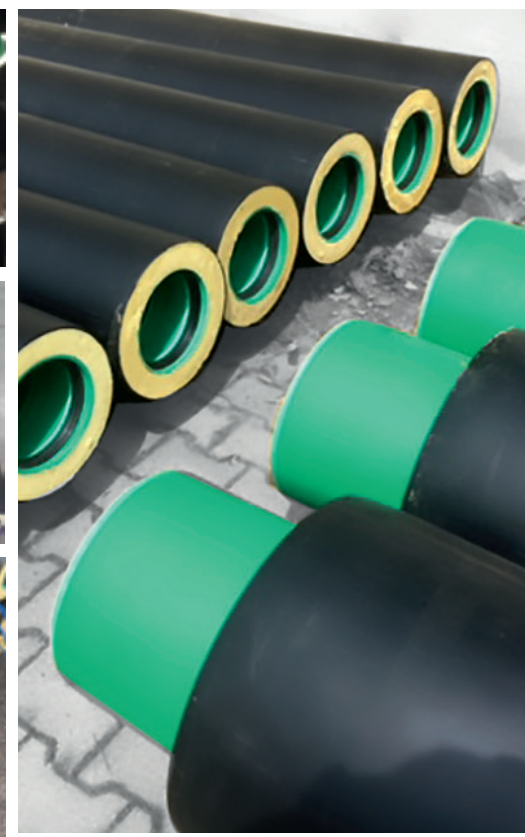
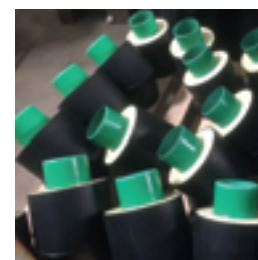


Download Product
Catalogue



Nominal and Insulated Diameters

d Pipe	D PE-Jacket
110	200
125	225
160	250
200	315
250	400
315	450
400	560
500	710



Pipe System for the Transport of Fatty Sewage



System

For the transport of fatty sewage (*up to the grease separator*), we offer a pipe system which consists of the components

- KG pipe,
- composite insulation and
- trace heating.

Heating

The electric trace heating is installed with 31 W/m on the inner pipe, which is mounted at each connection with a cable connection, using the crimp-sleeve technique.

Pipes

The pipes are 6 m long. We also supply matching bends and branches. Depending on the substances that are to be transported in the pipes, NBR sealing rings are also possible.

In the case that sewage pipes cannot be installed frost-free, we can also supply them as insulated pipes only or with simple frost protection strips.

For installation in shafts or cellars, the pipe can also be manufactured with a sheet metal jacket.

Joining Technique

All plug-in socket pipes are insulated flush with the socket, with a free spigot. After assembling, the jacket pipe is connected watertight with a shrink bandage. Shrink end caps are mounted at the beginning and end of each insulated section.

In the case of plug-in socket pipes with trace heating (*for frost protection or for fatty sewage*), a further piece remains uninsulated in addition to the free spigot, in order to have space left for the heating cable connections after assembly.

These areas are thermally insulated with WPE material for insulation and wide shrink-on collars or long sockets, using the shrink technique.

Pipes up to 6 m Length | Double Socket | Pipe Branches in 45° or 90° | Bends in all Standard Degrees